

NOVA-2000 Surgical Microscope:
Peerless Performance in
Dentistry and Surgery



Supporting Surgical Precision
Designed to Last



WORK SMARTER, SEE CLEARER, ACHIEVE MORE

The NOVA-2000 Surgical Microscope by Nova Optics is engineered to elevate your clinical outcomes through enhanced visualisation and ergonomic comfort. Designed specifically for dentistry and in-office surgical procedures, it delivers exceptional optical performance, long-term reliability, and user-focused design. Paired with the Allcam-2000 full-HD digital camera, it allows seamless patient communication and precise case documentation.

PRECISION-ENGINEERED FOR YOUR COMFORT

INCLINABLE BINOCULAR HEAD

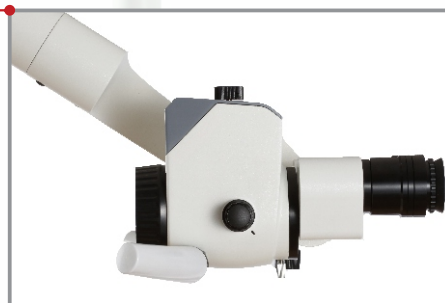
- ▶ 0-180° adjustable binocular head adjusts to your preferred working posture and surgical angle, ensuring better ergonomics during long procedures

TRUE-TO-LIFE VISUAL CLARITY

- ▶ Daylight-balanced LED illumination
- ▶ Five customizable lighting modes to match tissue type and surgical needs
- ▶ High-intensity, shadow-free lighting - ideal for deep or narrow cavities

SEAMLESS ERGONOMICS & CONTROL

- ▶ Ergonomic handgrips with intuitive, thumb-controlled magnification
- ▶ Single-handed head adjustment allows on-the-fly positioning without interrupting workflow



DESIGNED FOR CLINICAL EFFICIENCY

- ▶ Internal cable routing minimizes clutter and simplifies disinfection
- ▶ Seamless, precision-machined housing meets high OR hygiene standards

UNINTERRUPTED OPERATION - ANYTIME

- ▶ 12V DC power adapter minimises electrical risk
- ▶ Compatible with power banks - ideal for settings with inconsistent power supply

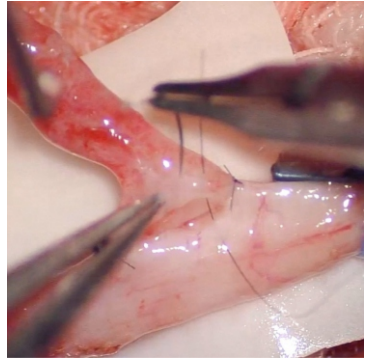


YOUR SURGICAL PARTNER—EVERY STEP OF THE WAY

From micro-dentistry to minor reconstructive procedures, the NOVA-2000 delivers superior magnification and illumination to support accuracy and confidence in every step. It's not just a microscope, it's a dependable extension of your surgical expertise.

VISUAL COMMUNICATION THAT BUILDS TRUST

In today's image-driven world, the Allcam-2000 digital camera empowers you to share clear, high-definition visuals with your patients. Whether explaining diagnoses, demonstrating treatment plans, or documenting outcomes, this visual aid builds understanding and trust, fostering higher patient satisfaction and compliance.



ALLCAM-2000 DIGITAL CAMERA

- ▶ Full-HD live video with still image and video capture function
- ▶ 1080P 60FPS digital camera
- ▶ Built-in 32GB SD memory card
- ▶ Multi-platform compatible



OPTIONAL ACCESSORIES

Maximize efficiency with hands-free control and a clutter-free surgical suite.

WIRELESS FOOT SWITCH

- ▶ Capture images or record video with a simple foot press — no need to pause or touch controls mid-procedure.

WIRELESS VIDEO SENDER

- ▶ Stream live video feed from the camera to any monitor without cables, enhancing your OR workflow and reducing setup time

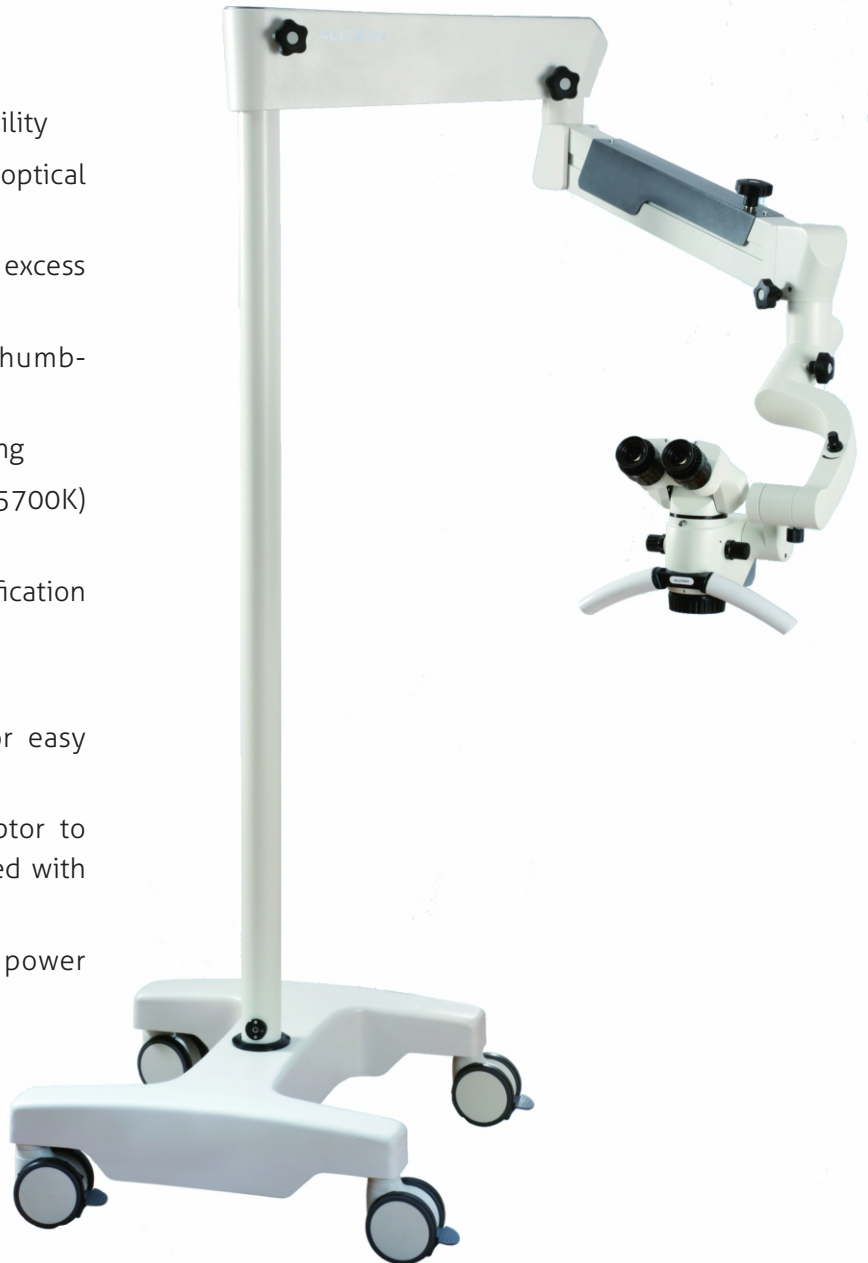


WIRELESS FOOT SWITCH

WIRELESS VIDEO SENDER

FEATURES

- ▶ Solid metal frame for long-term durability
- ▶ Precision-engineered, multi-coated optical lenses
- ▶ Integrated iris diaphragm to eliminate excess light from the field of view
- ▶ Ergonomic handle design with thumb-magnification control
- ▶ One-hand microscope head positioning
- ▶ Daylight-spectrum LED illumination (5700K) with five light modes
- ▶ Manual 5-step magnification (magnification range: 3.4X - 21X)
- ▶ Working distance: 250-430mm
- ▶ All cables are routed internally for easy cleaning
- ▶ Power supply via 12V power adaptor to eliminate the inherent risk associated with high-voltage medical devices
- ▶ Power bank can be used during power outages



MICROSCOPE SPECIFICATIONS

Eyepiece	12.5X / 18mm
Binocular Tube	0 - 180° inclinable
Objective Lens	Variable objective lens 200 - 300mm
Magnification Range	3.4X - 21X
Integrated Camera	Optional Full-HD digital camera
Illumination	LED \geq 80,000 lux
	Colour Temperature: 5700K
	Three Illumination area sizes (no filter): small, medium, large
	Two filters: green, yellow
Power Supply	12V DC
Frame Size	First arm: 460mm
	Second arm: 650mm
	Length or arm: 1370mm
Size of Base	580 x 580mm
Wall or Ceiling Mount	Optional

CAMERA SPECIFICATIONS

Sensor	1/2" SONY high-sensitivity and low noise CMOS
Resolution	HD 1080P 60fps (16:9)
Storage	Built-in 32G SD memory.
	USB flash drive can be mounted externally
Data Format	Picture: JPEG; Video: MP4
Basic Functions	Freeze, photograph, video recording, auto exposure,
	white balance, playback and cross curve
Image Effects	Exposure value, brightness, saturation, contrast, HDR
PC Compatibility	Windows XP, WIN 7, WIN 8, WIN 10
Mobile Compatibility	Android, IOS
Optional Accessories	Wireless foot switch, wireless video sender



Nova Optics (Pty) Ltd

www.nova-optics.co.za